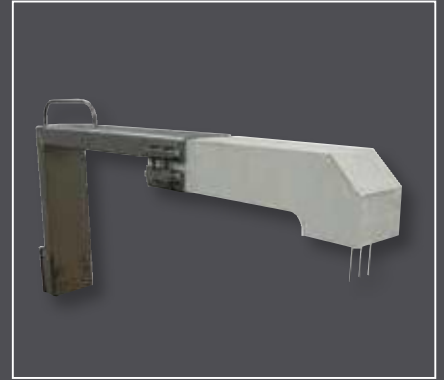
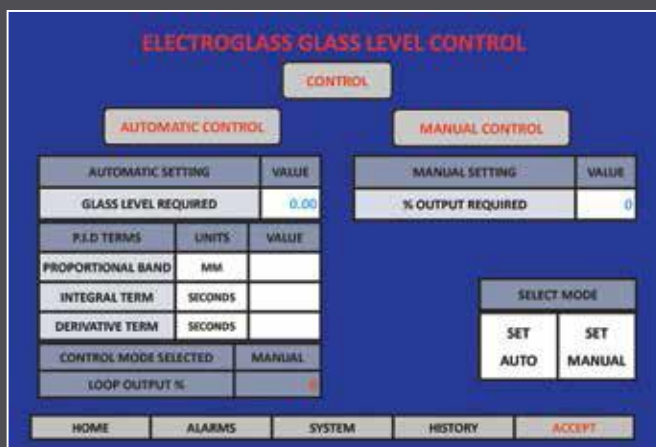


## Glass Level Sensor

A range of Glass Level Sensing and Control Systems from basic level sensors to fully integrated stand-alone control systems to meet each individual furnace and production requirements.



- System consists of probe block with platinum alloy pins and control or indication unit, connected to single phase power supply
- Designed for installation in a furnace working end, distributor or forehearth
- System operation not affected by changes in glass temperature or composition
- Real time glass level information
- Accurate to 0.1mm
- Simple and easy to install
- No moving parts
- No water or air cooling required
- Minimal maintenance
- No on site calibration required





### Glass Level Sensor

- Sensing unit designed to interface with existing glass level control system
- Output signals of 0-5V and 4-20mA are provided
- Special interconnection cables included
- Proven installation techniques allow system to be installed during operation where suitable refractory construction exists
- Automatic and manual control options
- Latest versions compatible with existing Electroglass Glass Level probe block

### Glass Level Controller

- Free-standing control system
- PLC based PID block offers full glass level control
- Touch screen HMI display with historical trending
- Output signals of 0-5V and 4-20mA are provided
- Output to existing vibratory feeder or screw charger

### Glass Types and Products

- Soda Lime
- Borosilicate
- Fluoride Opal
- Potassium Barium
- TFT
- CRT
- Ceramic
- Lead Crystal
- Crystalline
- Containers
- Tableware
- Lighting
- Ovenware
- Pharmaceutical
- Automotive
- Glass Wool
- Fibreglass
- Tubing
- Insulators

### Electroglass Ltd

4 Brunel Road, Manor Trading Estate  
Benfleet, Essex, SS7 4PS, England

t: +44 (0)1268 565577  
f: +44 (0)1268 565594

e: [info@electroglass.co.uk](mailto:info@electroglass.co.uk)  
w: [www.electroglass.co.uk](http://www.electroglass.co.uk)