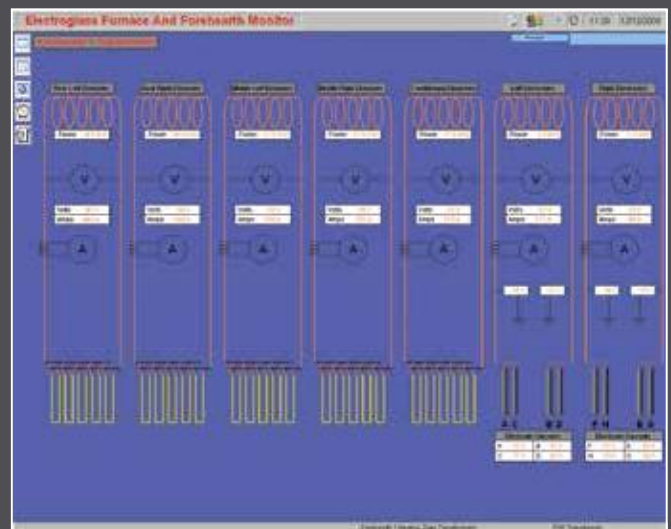


Electrosealed Forehearths

Highly efficient All-Electric Forehearths to cool and condition volatile glass types providing precise temperature control and consistent thermal homogeneity.



- Forehearth completely electrically heated during normal operation and initial heat up
- Special sealing cover tile arrangement minimises volatilisation without increasing refractory-glass contact
- Flexible design makes conversion of existing gas-fired or electric sealed forehearths possible even during furnace campaign
- No cooling air or other fuels required
- Fast temperature response when increasing or decreasing gob weight ensures minimum production down time during job changes
- Multiple heating zones both in glass and above glass allow precise containment of heating and cooling
- Low power, electrode heating using special design dry electrodes ensures consistent glass quality without risk of induced DC voltage, a problem common with some other designs
- Automatic power/temperature and manual control facility for each heating zone
- Extremely high thermal efficiency due to low thermal mass superstructure and insulation
- Special substructure design reduces temperature gradients and heat loss from the channel
- Centreline radiation cooling and low power electrode heating greatly reduce side to centre temperature differential





Electroseal Forehearths

- Standard channel widths:
305mm (12") 400mm (16")
660mm (26") 915mm (36")
- Special channel widths also available
- Lengths to suit existing layout and gob drop points, where applicable

Electroseal Distributors

- Channel widths, depths and lengths to suit existing layouts, where applicable
- Simple, accurate temperature control
- Substantial energy cost savings compared with gas-fired and other all-electric distributors and working ends

Glass Types and Products

- Fluoride Opal for Tableware, Cosmetic Containers and Lighting Products
- Borosilicates for Cookware, Pharmaceutical, Automotive Components, Optical and Lighting Products
- Lead Crystal for Tableware, Cosmetics and Ornamental Pieces
- Other specialist and Technical Glasses

Electroglass Ltd

4 Brunel Road, Manor Trading Estate
Benfleet, Essex, SS7 4PS, England

t: +44 (0)1268 565577
f: +44 (0)1268 565594

e: info@electroglass.co.uk
w: www.electroglass.co.uk